

POTATO WART

Symptoms appear on all underground plant parts except roots



To report and learn more: canada.ca/StopInvasiveSpecies



Prevent the spread
Don't move contaminated soil or infected tubers



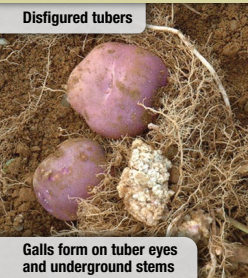
Canadian Food
Inspection Agency

Agence canadienne
d'inspection des aliments

Canada

POTATO WART (*Synchytrium endobioticum*)

Disfigured tubers



Galls form on tuber eyes and underground stems

Photo Credits: CFIA



- Galls are white or potato skin colour
- They are soft, pulpy and darken over time

