

OAK WILT



- **Early leaf drop**
- **Leaves turn dull green, brown or yellow**
- **Discolouration progresses from leaf margin to midrib**

To report and learn more: canada.ca/StopInvasiveSpecies



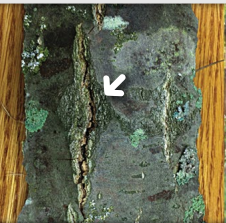
Canadian Food
Inspection Agency

Agence canadienne
d'inspection des aliments

Canada

OAK WILT (*Bretziella fagacearum*)

Bark cracks caused by pressure pads



Symptomatic leaves



Pressure pads form under bark and emit a fruity smell

Photo Credits: Iowa State University, Julie Holmes (CFIA), Minnesota DNR, Steven Katovich (USDA-FS)