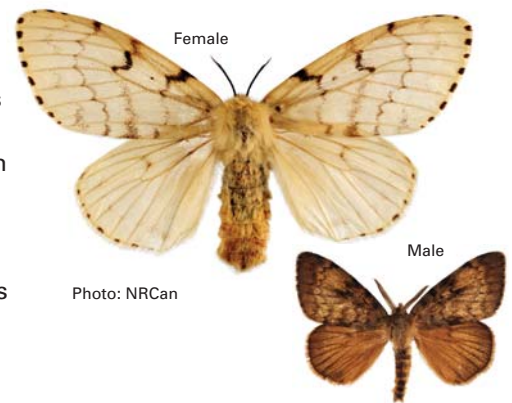


Asian Gypsy Moth

The problem

The Asian gypsy moth is an invasive insect. It poses a significant threat to Canada's forests, biodiversity and economy. These moths can feed on a wide range of economically important tree species, as well as other important plants.

Ships and cargo—including containers and used vehicles—can carry the egg masses of these moths to Canada from China, Japan, Korea and Russia (Far East region). In the right conditions, caterpillars hatch from these egg masses and they can go great distances with the wind to find food.

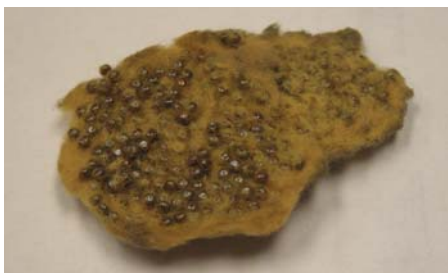


What you can do

▶ Know what the moth and egg mass look like.

The female is large in size. They range from white to light grey in colour, with black markings on the wings.

Asian gypsy moth egg masses are 2 to 4 centimetres long. They are gold to dark brown in colour, with fine hairs covering the eggs. They are often found in sheltered areas (for example, out of the rain and direct sun).



▶ Inspect and report

All marine vessels entering Canada can be inspected, at any time of year, to verify that they are free from Asian gypsy moth and rosy gypsy moth. If an inspection finds either of these moths, at any of their life stages, vessels are not allowed to stay in Canadian waters.



▶ Do not paint over viable egg masses.

Painting over the egg masses will not kill them.

If you find egg masses resembling the images on this brochure, please contact the nearest Canadian Food Inspection Agency (CFIA) office.



Stop the spread of invasive species

An invasive species can be any plant, animal, aquatic life or micro-organism that spreads when introduced outside of its natural distribution. Invasive species can cause serious and often irreversible damage to Canada's ecosystems, economy and society.

The CFIA is the Government of Canada's science-based regulator for animal health, plant protection and food safety. The CFIA plays an important role in protecting Canada's plant resource base from pests and diseases.

For more information please visit the CFIA's website at www.inspection.gc.ca or contact the CFIA at 1-800-442-2342.



Canadian Food
Inspection Agency

Agence canadienne
d'inspection des aliments

Canada