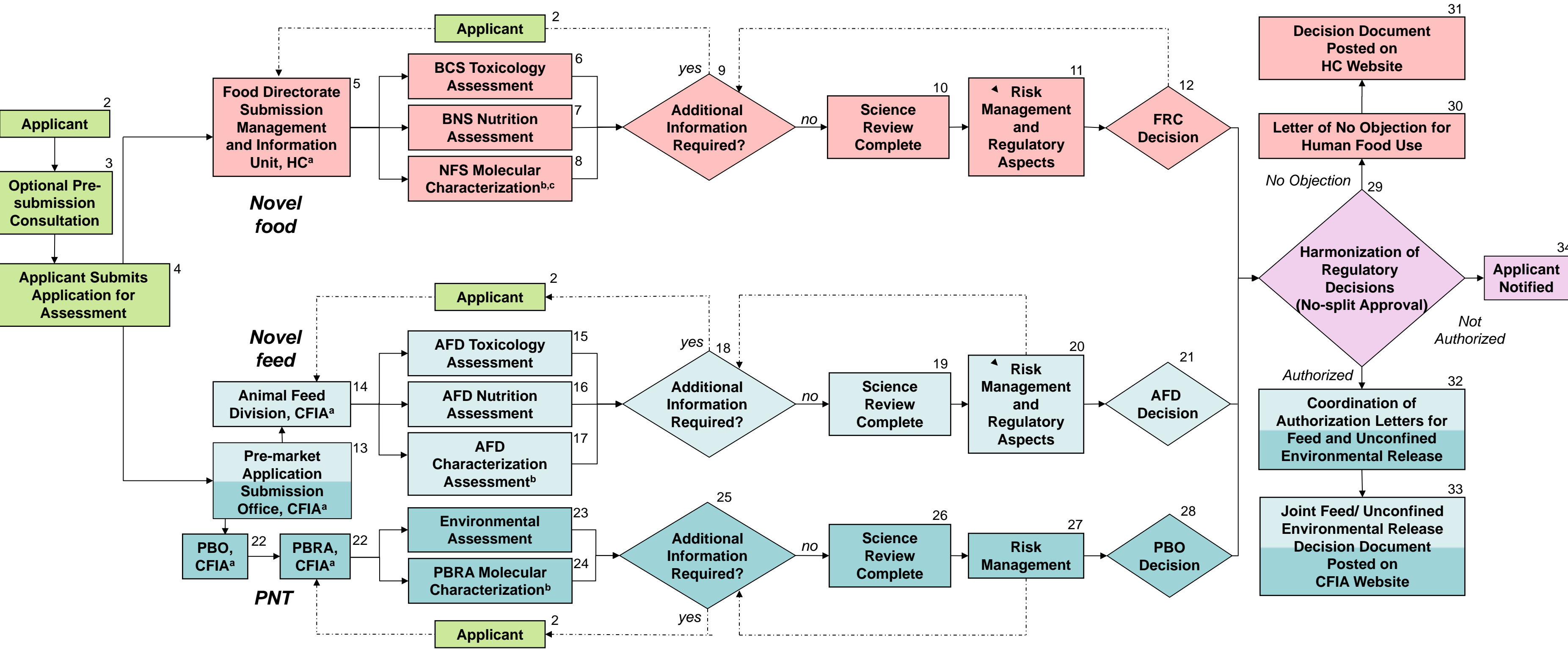


Canadian Pre-Market Regulatory Process for Plants with Novel Traits and Novel Foods and Feeds Derived from Plant Sources



Legend

- Path forward in regulatory assessment process
- ⋯→ Path for request(s) for additional information
- Red box: Health Canada (HC) role
- Light blue box: Animal Feed Division role
- Dark blue box: Plant Biosafety Office (PBO) and/or Plant and Biotechnology Risk Assessment Unit (PBRA) role
- Medium blue box: Canadian Food Inspection Agency (CFIA) role
- Pink box: Joint CFIA/HC role
- Green box: Applicant role

^a These units co-ordinate non-technical aspects of the approval process
^b These units coordinate the molecular characterization assessment portion of data packages between HC and CFIA
^c The Novel Food Section (NFS) coordinates the technical aspects of the approval process within the Food Directorate