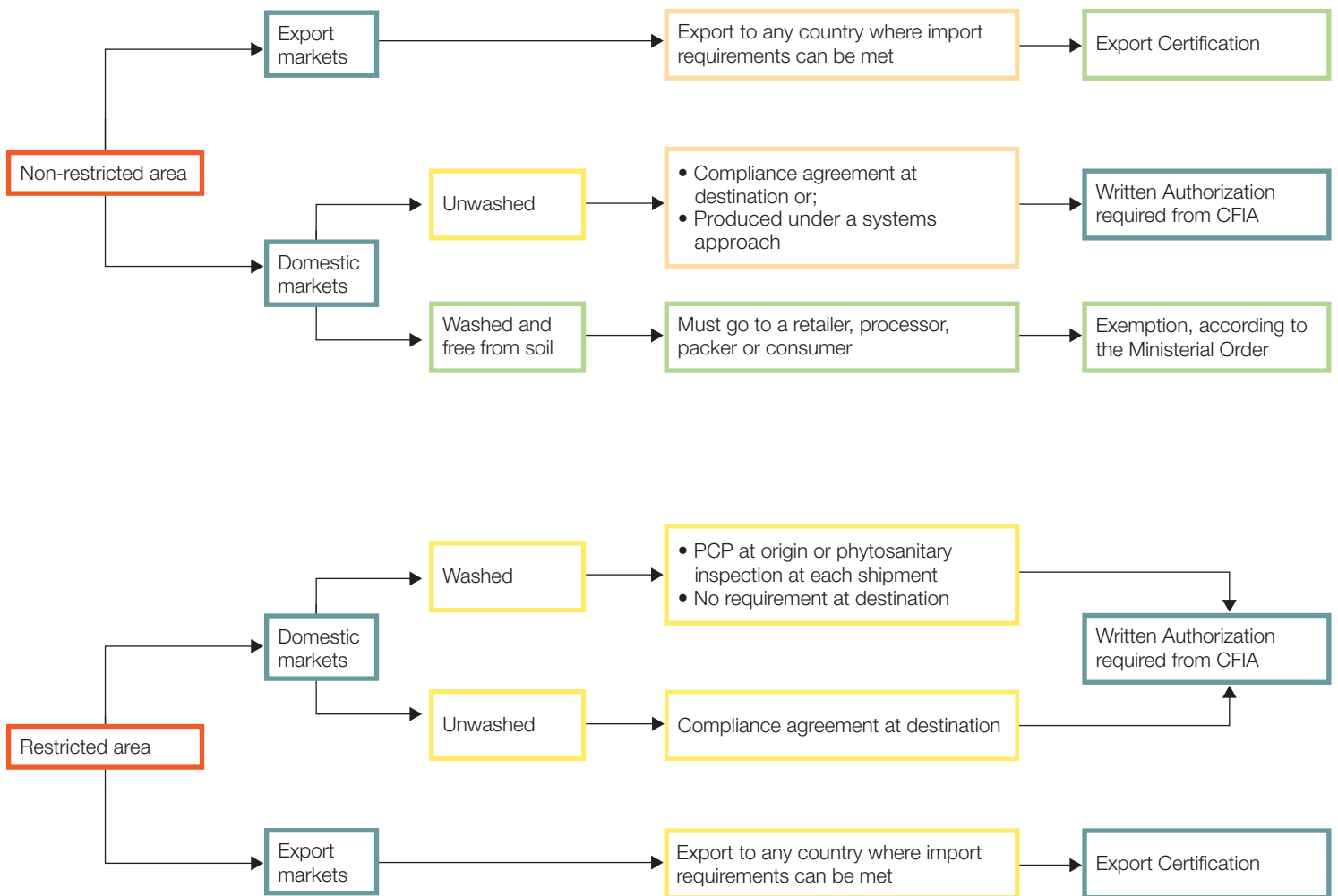


ROOT CROPS LEAVING PEI*



Written Authorization: Movement Certificate, Authorization letter

Restricted Area: Any field or place identified by the Canadian Food Inspection Agency (CFIA) as an Index field, Adjacent field, Primary Contact field or Other Contact field as per the Potato Wart Domestic Long Term Management Plan (PWLDTMP)

Compliance Agreement: An audit-based quality management systems approach used to mitigate the phytosanitary risks associated with the handling of the regulated articles throughout the activities of a receiving facility

Preventive Control Plan (PCP): Written document that demonstrates how risks are identified and controlled

Systems approach: An audit-based system that incorporates different measures to mitigate the risk associated with the spread of a pest

*Other than potatoes