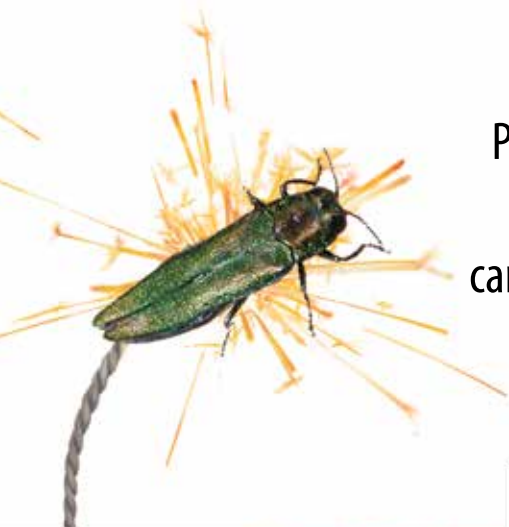
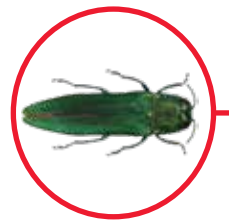


# BUY LOCAL BURN LOCAL DON'T MOVE FIREWOOD



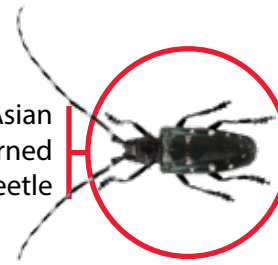
Pests in your firewood can **DESTROY** our forests.



Emerald Ash Borer



European Gypsy Moth



Asian Long-horned Beetle



'S'-shaped marks caused by the emerald ash borer



Asian long-horned beetle exit holes



Emerald ash borer exit hole



Defoliation from gypsy moth

## TRANSPORTING FIREWOOD CAN DESTROY MILLIONS OF TREES

Invasive insects and diseases can exist in firewood. Moving untreated firewood, even just a few kilometres to or from a campground or a cottage, is a common way for invasive insects and diseases to spread.

These pests kill trees in our forests, cities, streets and parks. This affects air and water quality. It deprives animals of habitat. It damages private property and reduces land value. It can also have devastating effects on Canada's forestry industry and on our ability to trade with other countries that want to keep these pests out.

The emerald ash borer, for example, has killed millions of ash trees in Canada since it first arrived from Asia. On its own, it doesn't move very far. Hiding in firewood, though, it can travel vast distances when that wood is moved by people. Then it kills more trees in new areas to which it has been moved.

Moving firewood from places where invasive insects and diseases have been found can be a violation of the Plant Protection Act, with penalties up to \$50,000 and/or prosecution. Be aware of restrictions that may be in place before you move wood or wood products.

For more information about these restrictions, contact your local Canadian Food Inspection Agency (CFIA) office.

The CFIA plays an important role in protecting Canada's plant resource base from invasive insects and diseases.

## DON'T MOVE FIREWOOD

**BUY** and burn it locally.

**EDUCATE** yourself about invasive species threatening trees in your area or destination.

**FOLLOW** all rules and regulations related to moving firewood and other wood products within Canada.

Learn more:  
[inspection.canada.ca/firewood](https://inspection.canada.ca/firewood)  
or 1-800-442-2342

